

PLOW-GRIPS

00600 series

These products are specifically designed for installation of PVC or PE duct by **Vibratory Plow** and are particularly suited to agricultural applications because of their quick installation and removal.

DCD Plow-Grips are comprised of a Stainless Steel body and a clevis head with 8 links of hardened steel chain attached and hardened Stainless Steel expanding jaws with teeth that grip the inside of the ducting.

Since there are various outside and inside diameters for ducting, the DCD Plow Grip now has a single sleeve with a different bore size at each end. Should your ducting not fit at one end, reverse the sleeve and check the other end. The two sleeve sizes will cover 80 lb. and 100 lb. PE duct and Sched. 40 up to SODR 26 PVC duct as well as CSA B137.1 PE duct.

To assemble the Plow-Grip to the ducting, the head is pushed against a spring which contracts the hardened steel jaws. The Plow-Grip can then be sleeved over the ducting. When the head is released, the jaws expand inside the duct and bite into the duct wall. As the pulling load is applied, it increases the bite of the jaws. When the pull is complete, pushing the head down will again contract the jaws allowing the Plow-Grip to be removed from the ducting.



Web Site: www.dcdesign.com
E-mail: sales@dcdesign.com

Toll Free: 1-888-SWIVELS (794-8357)
Tel: 604-232-4445
Fax: 604-232-4446

Part No.	Nominal Pipe Size	Min. Duct Inside Dia.	Max. Duct Inside Dia.	Max. Duct Outside Dia.	Weight
00600-075	3/4"	0.824"	0.970"	1.060"	2.1 lb.
00600-100	1"	1.050"	1.220"	1.325"	2.3 lb.
00600-125	1-1/4"	1.380"	1.540"	1.670"	2.7 lb.

DUCT PULLERS

00604 / 00605 series

These products are designed to install polyethylene ducting using a screw-in tapered thread to grip the inside diameter of the duct. The Duct Pullers are installed quickly and easily and require no special tooling. They are manufactured out of steel and chrome plated for durability.

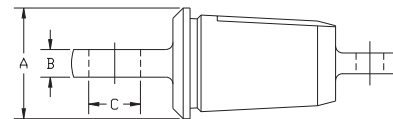
The pullers are typically used to install innerduct inside a larger duct. However, the 00604 and 00605 series may also be used for Directional Drilling applications and because there are no moving parts, they are reliable and maintenance free. All of these pulling eyes are designed with cutting edges to actually cut a thread in the bore of the ducting as it is being screwed in, much the same way as using a tap to cut a thread in steel. This helps to ensure a reliable grip. Installation typically requires only 7 or 8 full threads of contact to give a grip stronger than the ducting itself.



00604 DUCT PULLER – LUG

The Lug Type, Series 00604, are recommended when attaching directly to a line swivel or other clevis type connector.

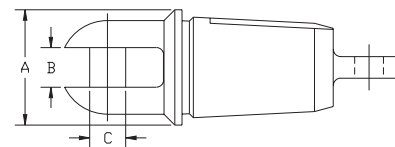
Lug Type Part No.	Nominal Duct Dia.	Min. Duct Inside Dia.	Max. Duct Inside Dia.	A	B	C	Weight
00604-075	3/4"	0.72"	0.93"	1-1/8"	11/32"	17/32"	0.54 lb.
00604-100	1"	0.94"	1.15"	1-3/8"	11/32"	21/32"	0.79 lb.
00604-125	1-1/4"	1.26"	1.44"	1-3/4"	11/32"	21/32"	1.40 lb.
00604-150	1-1/2"	1.48"	1.66"	2"	1/2"	15/16"	2.00 lb.
00604-200	2"	1.91"	2.08"	2-1/2"	1/2"	15/16"	3.20 lb.
00604-010	Driving Tool for Lug Type Pullers (with 1/2" square drive)						2.0 lb.



00605 DUCT PULLER – CLEVIS

The Clevis Type Series 00605 are better if attaching to a pulling rope or wire with an eye that can be slotted into the clevis and simply attached with the pin provided.

Clevis Type Part No.	Nominal Duct Dia.	Min. Duct Inside Dia.	Max. Duct Inside Dia.	A	B	C	Weight
00605-100	1"	0.94"	1.15"	1-3/8"	17/32"	13/32"	0.96 lb.
00605-125	1-1/4"	1.26"	1.44"	1-3/4"	17/32"	13/32"	1.50 lb.
00605-150	1-1/2"	1.48"	1.66"	2"	11/16"	5/8"	2.20 lb.
00605-200	2"	1.91"	2.08"	2-1/2"	11/16"	5/8"	3.40 lb.



For sales and service contact your local dealer:



Trenchless Utility Equipment Inc.
2070 Queensway Drive,
P.O. Box 1338 Burlington, ON L7R 4L9
Ph: (905) 634-0669 Fax: (905) 634-6685
info@trenchlessutility.com

DCD