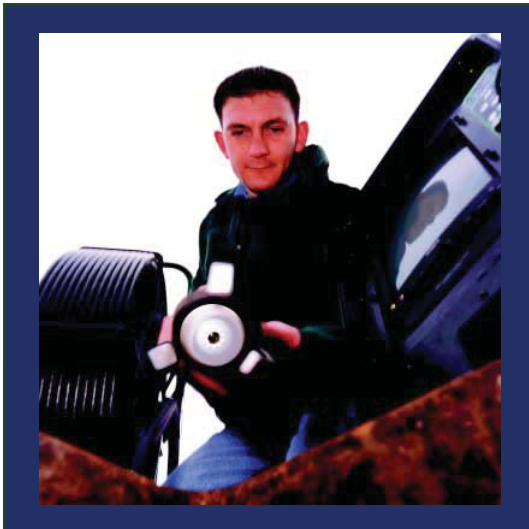


The GatorCam



... an operator-controlled system specifically designed to **View**, **Video-record** and **Pinpoint** underground obstacles, blockages, damage etc., in small-bore underground utility/service pipes.



For sales and service contact your local dealer:



Radiodetection

TRENCHLESS
UTILITY EQUIPMENT INC.

Trenchless Utility Equipment Inc.
2070 Queensway Drive,
P.O. Box 1338 Burlington, ON L7R 4L9
Ph: (905) 634-0669 Fax: (905) 634-6685
info@trenchlessutility.com

Clear the problem with:

A range of cable lengths to suit most pipework applications.

A range of cameras - black and white or colour - for clarity.

Robust and easy to use operator control centre.

A system that will operate with power supplies from 12 V dc to 230 V ac.

The GatorCam

Introduction

The **Radiodetection GatorCam system** has been designed for the internal inspection of small-bore pipes 38 mm to approximately 300 mm in diameter, up to a distance of 120 m – *down to the millimetre.*

The GatorCam system is perfect for:

inspecting underground utility/service pipes, septic tanks, boiler tubes, electric conduits, chimneys etc, in fact most places where the eye cannot see.

The GatorCam system comprises:

a **waterproofed**, cable-mounted camera, with a **scratch-resistant** sapphire lens, which relays television pictures back to an easy to use, portable control centre. The control centre contains a television screen, video recorder and user controls. In fact, everything that the operator needs - in a compact, robust carrying case.

The camera cable is semi-rigid and acts as a push-rod, yet is sufficiently flexible to negotiate tight bends. The camera head is **protected** against damage to the lens and its LEDs. A range of purpose-designed skids ensure that the camera is in the optimum position within the pipe.

GatorCam System

The GatorCam can be configured to provide **two types of system**, either a 50 mm camera mounted system on a standard cable reel or a 25 mm camera system mounted on a mini cable reel.

The Standard Cable Reel

The standard cable reel comprises up to 120 m of semi-rigid camera cable with a 50 mm camera (**colour or black/white**) mounted at the cable head. The standard cable reel is suitable for inspecting pipes from 50 mm to approximately 300 mm in diameter.

The Mini Cable Reel

The mini cable reel comprises up to 60 m of semi-rigid camera cable with a 25 mm camera (black/white only) mounted at the cable head. The mini cable reel is suitable for inspecting pipes from 38 mm to approximately 150 mm in diameter.

GatorCam Control Box

The Standard Cable Reel and the Mini Cable Reel both interface with a compact and portable control box. The control box allows the operator to **view** the image as seen by the camera. The operator can even **video-tape** the complete inspection process if required. The operator also has the facility to title the video-tape with address/location details and date/time information.



A range of cable lengths
(Standard or Mini)



Rugged, Control Box



A Range of camera Heads

Main Features



Easy-to-Use Controls

The control box is **ruggedised** to withstand the rigours of every-day use. With the cover on, the unit is fully waterproofed; with the cover off, the operator has everything to hand. We have even thought of the conditions under which the operator may have to operate and designed the control box to be viewed from virtually any angle – upright, at 45° or on its back. There is even a sun-shield that fits over the screen to help block bright sun-light.

☆ The GatorCam system has a range of cable lengths (up to 120 m) that will suit most small bore pipes.



Control Box Viewed Upright



Control Box Viewed at 45°

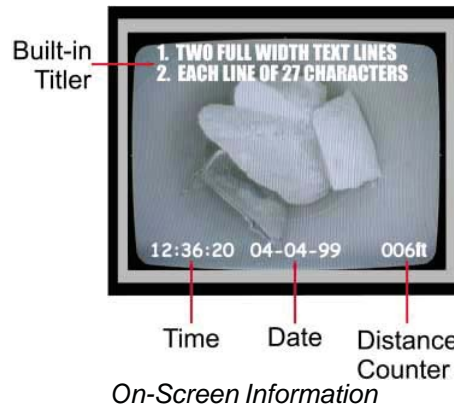


Control Box Viewed Flat

☆ The camera system can be configured for **black and white**, or **colour**.

☆ High brightness LEDs around the camera lens provide extremely **high visibility** in pipes up to 300 mm in diameter.

☆ The GatorCam system provides:
 (1) an on-screen distance counter, showing the amount of cable deployed;
 (2) on-screen date and time information;
 (3) an integral titler at no extra cost so that customer details can be displayed on-screen.



☆ To protect your investment the face of the camera is partially shrouded by the camera casing. This will prevent damage to the lens and LEDs. Extra protection is afforded by a P-trap skid, which is easily fitted to the camera casing, to help ease the camera round P-traps and bends.

☆ The cable reels have a protective coating on the tubular frame. This feature, and the open framework, allows the reel and cable to be hosed down after use.



LEDs To Show You The Way

☆ The camera cable is semi-rigid and acts a push-rod, yet is sufficiently flexible to negotiate tight bends.

☆ The GatorCam contains an integrated, active sonde-like locating system. At the touch of a button from the control box the GatorCam sends a locate signal to the camera-head. Using a suitable locator (Gator Locator) the position of the camera below ground can be accurately pinpointed.

☆ The GatorCam system has a range of accessories, some optional, to make the task even easier.

Operating The GatorCam

The GatorCam system is an extremely versatile system, and is easy to use. To make it even simpler, the system can be operated from a range of input supplies:

- 115 V ac or a 230 V ac mains input supply,
- 12 V dc or 24 V dc supply.

The 12 V dc and 24 V dc supplies must be applied through an inverter (optional accessory) in order to provide the appropriate 115 V ac or 230 V ac input supply. The GatorCam can therefore be powered-up from a vehicle's 12 V electrical supply.

Powering-up The GatorCam

The system is easy to power-up, and operate. Simply remove the control box cover, connect the cable reel to the GatorCam control box and the GatorCam control box to a suitable power supply. The GatorCam is now ready to operate.

Full user instructions are provided in the accompanying User Guide and User Manual.

Accessories

The GatorCam comes with a range of optional accessories:

- ✓ 12 V dc Adapter
- ✓ Gator Locator
- ✓ Gator Tx
- ✓ Full Text Editor
- ✓ A Range of Skids (to hold the camera centrally within the pipe).



Power ON indicator

Built-in transmitter - push the button to activate the transmitter

Built-in Titler, time/date stamp and on-screen distance counter control panel

Picture inverter

Voice-over ON/OFF

LED dimmer control

Built-in microphone

External microphone jack

Camera connection

External titler connection panel

Control box power switch

Power supply input connector



Specifications

GatorCam Cable Specifications

	Standard Cable Reel	Mini Cable Reel
Size	650 mm x 300 mm x 846 mm	440 mm x 265 mm x 565 mm
Capacity	60 m 90 m 120 m	30 m 60 m
Weight	60 m = 20.3 Kg 120 m = 29.8 Kg	30 m = 11.6 Kg 60 m = 15.6 Kg
Construction	Reel – mild steel bar Stand – mild steel tube	Reel – mild steel bar Stand – mild steel tube

GatorCam Camera specifications

	Mini Camera	Standard Camera	Colour Camera
Dimensions	25.4 mm x 52.5 mm	42.6 mm x 48 mm	42.6 mm x 68.5 mm
Power	2.7 W	3.1 W	3.9 W
Operating Depth	105 m (150 psi)	105 m (150 psi)	105 m (150 psi)
Housing Materials	Stainless steel housing with shatterproof polycarbonate nose piece. Sapphire Lens.	Stainless steel housing with shatterproof polycarbonate nose piece. Sapphire Lens.	Stainless steel housing with shatterproof polycarbonate nose piece. Sapphire Lens.
Operating Pipe Diameters	38 mm to 152 mm	50 mm to 300 mm	50 mm to 300 mm
Resolution	380 (H) x 380 (V)	380 (H) x 380 (V)	570 TV Lines (H)
Illumination	18,000 Mcd bright	58,800 Mcd bright	42,000 Mcd bright

Gator Locator Specifications

Operating modes/Frequency	Camera locator/640 Hz Pipe Locator/65 kHz Power Cable locator/60 Hz
Dynamic Range	92 dB
Depth Range	6 m 3 m in cast iron pipe

Locating the GatorCam



Locating the GatorCam camera could not be simpler. **Use the Gator Locator!** The Gator Locator is a high-tech instrument that tells you where the camera pipe is, and at what depth. With the touch of a button you can locate not only the GatorCam camera but cast iron pipe to a depth of 3 m, and plastic and clay pipe to a depth of 6 m.

To let you know precisely where the target is, the locator's LCD display shows a digital read-out of depth, as well as a bar-graph display and audible tone.



World Wide Web: <http://www.radiodetection.com>



Radiodetection Ltd
Western Drive
Bristol
BS14 OAZ
United Kingdom

Tel +44 (0)117 976 7776
Fax +44 (0)117 976 7775
sales.uk@radiodetection.com



Radiodetection SRO
Sumavska 15
602 00 Brno
Czech Republic

Tel +42 (05) 41248485
Fax +42 (05) 41248351
sales.cz@radiodetection.com



Radiodetection Corp
35 Whitney Road
Mahwah
NJ 07430
USA

Tel +1 (201) 848-8070
Fax +1 (201) 848-1303
sales.us@radiodetection.com



Radiodetection Sp. z.o.o.
ul. Knapowskiego 23
60-126 Poznan
Poland

Tel +48 (0)61 8668298
Fax +48 (0)61 8668279
sales.pl@radiodetection.com



Radiodetection GmbH
Rauhe Straße
D-46459 Rees
Germany

Tel +49 (0)2851-9237-20
Fax +49 (0)2851-9237-520
sales.de@radiodetection.com



Radiodetection Pty Ltd
PO Box 768, Sanlamhof 7532
Cape Town
South Africa

Tel +27 (0)21 946 1096
Fax +27 (0)21 948 2528
sales.za@radiodetection.com



Radiodetection Sarl
13 Grand Rue
76220 Neuf Marché
France

Tel +33 (0)2 32 89 93 60
Fax +33 (0)2 35 90 95 58
sales.fr@radiodetection.com



Radiodetection ROM S.R.L
Str. Lt. Av. Ion Garofeanu NR.22
Sector 5
Bucharest
Romania

Tel +4-01-4116844
Fax +4-01-4209541
sales.ro@radiodetection.com



Radiodetection S.r.l
Via XX Settembre 43
27020 Gravellona Lom (PV)
Italy

Tel +39 0381 959811
Fax +39 0381 95884
sales.it@radiodetection.com



Radiodetection Migamma Kft
Irinnyi u. 17
H-6000 Kecskemet
Hungary

Tel +36 76 484781
Fax +36 76 484781
sales.hu@radiodetection.com



Radiodetection B.V. Benelux
Industriestraat 11
7041 GD 's-Heerenberg
Netherlands

Tel +31 (0)314 66 47 00
Fax +31 (0)314 66 41 30
sales.nl@radiodetection.com



Radiodetection S.L.
Marquesa Vda
de Aldama 4-6 1-1
Alcobendas 28100 Madrid
Spain

Tel +34.91.663.6375
Fax +34.91.663.6376
sales.es@radiodetection.com



Radiodetection (Canada) Ltd
344 Edgeley Blvd
Unit 34 Concord
Ontario L4K 4B7
Canada

Tel +1 (905) 660-9995
Fax +1 (905) 660-9579
sales.ca@radiodetection.com



Radiodetection (Ukraine) Ltd
Khoriva Street 40, Apt 2
254071, Kiev 71
Ukraine

Tel +380 44 463-73-88
Fax +380 44 463-73-88
sales.ua@radiodetection.com



América Latina
Radiodetection Corp
35 Whitney Road
Mahwah, NJ 07430
USA

Tel +1 (201) 848-8070
Fax +1 (201) 848-1303
sales.latinam@radiodetection.com



Radiodetection Overseas
Western Drive
Bristol BS14 OAZ
United Kingdom

Tel +44 (0)117 9767776
Fax +44 (0)117 9760088
sales.rol@radiodetection.com



Radiodetection (Japan) Ltd
Room 203, maida Building
7-25 hiroshiba - Cho
Suita, Osaka 564-0052
Japan

Tel +81 (0)6 6192 0211
Fax +81 (0)6 6192 0212
sales.jp@radiodetection.com



Radiodetection (China) Ltd
Room 1209-10, Concordia Plaza
No.1 Science Museum Road
Kowloon
Hong Kong

Tel +852 2803 5881
Fax +852 2803 5863
sales.cn@radiodetection.com



Radiodetection

All Rights Reserved

Warranty

From the date of purchase through the applicable warranty period, Radiodetection will repair free of charge any warranted item which is found to be defective. All warranty inspections and warranty repairs must be performed by approved Radiodetection Service Centres.

Radiodetection accepts no responsibility for repairs needed as a result of misuse of the equipment, or as a consequence of servicing/repair carried out by unqualified persons, or from using parts not supplied by the company.

Radiodetection makes every effort to ensure that information about locating equipment and its use is correct. Radiodetection accepts no responsibility for damage or problems caused through use of the equipment. Priority must be given to local and national safety requirements. Radiodetection products are under continuous development and are subject to change without notice.